

TIME

Version

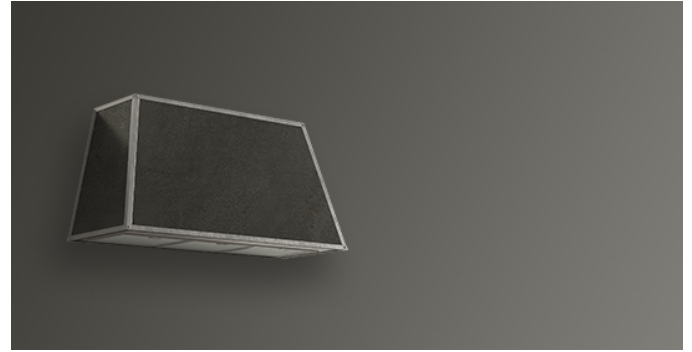
Wall 115 cm, Pewter, worn steel trim, 800 m³/h

Collection

Classic

EAN code

8034122477558



*The photograph is purely for information
It may not correspond to the selected version.*

FEATURES

Electronic control

LED lighting

Metallic grease filter, removable and washable

Charcoal filter included

Optional remote control

Painted Steel with Pewter finish

OPTIONAL ACCESSORIES

105080053

Remote control

KACL.798#41F

Remote under-roof motor 950 m³/h

KACL.770#41F

Remote under-roof 1100 m³/h

Brushless

KACL.786#41F

Outdoor extractor fan 1000 m³/h

KACL.796#4AF

Outdoor extractor fan 1500 m³/h

KACL.797#4AF

Remote under-roof motor 1300 m³/h

TECHNICAL FEATURES

Installation type

Wall

Dimensions

115 cm cm

Finishing

Painted pewter steel

Motor

800 m³/h

Type of control

Electronic control

PACKAGING:WEIGHTS AND VOLUMES

Gross weight

27.40 kg

Net weight

22.20 kg

Volume

0.43 m³

Packaging size

Length

1310 mm

Height

595 mm

Depth

550 mm

CONSUMPTION AND CONNECTION FEATURES

Maximum consumption

280 W

Voltage / Frequency

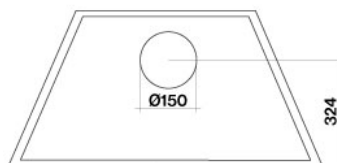
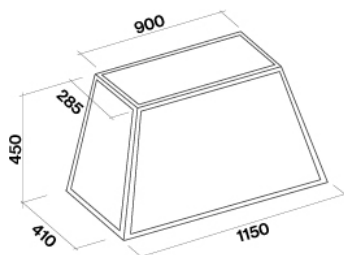
220-240V

50-60Hz

ENERGY CLASS

A

Rear view



TIME

Version

Wall 115 cm, Pewter, worn steel trim, 800 m³/h

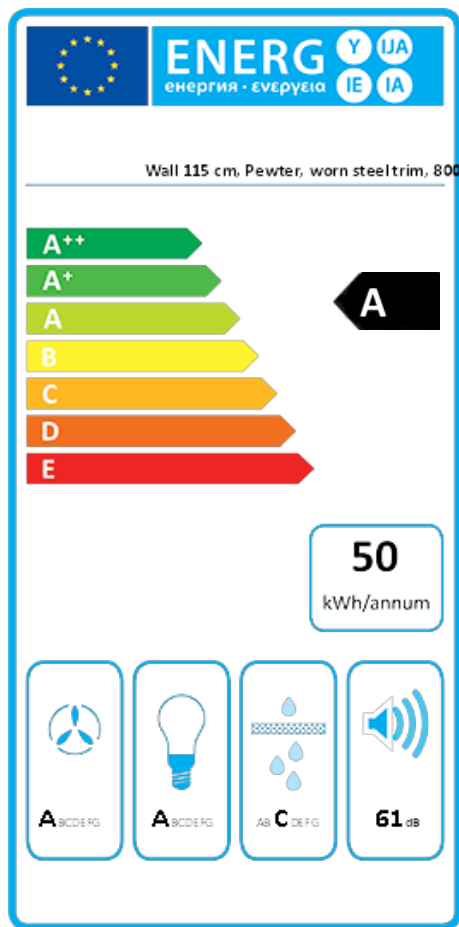
Collection

Classic

EAN code

8034122477558

ENERGY LABEL



PF		
S	Falmec Spa	
M	Wall 115 cm, Pewter, worn steel trim, 800	
AEC	49,5	kWh/a
ECC	A	
FDE	32,6	
FDEC	A	
LE	31,4	
LEC	A	
GFE	80,0	
GFEC	C	
Qmin	240,0	m ³ /h
Qmax	460,0	m ³ /h
Qboost	700,0	m ³ /h
SPEmin	49	dBa
SPEmax	61	dBa
SPEboost	66	dBa
PO	-	W
PS	0,48	W
PI		
F	0,8	
EEl	48,8	
Qbep	453,0	m ³ /h
Pbep	383	Pa
Qboost	700,0	m ³ /h
Wbep	148,0	W
WL	8,60	W
Emiddle	270	lux
Lwa-SPEmax	61	dBa

PF_Product fiche according to 65/2014 S_Supplier name / M_Model identification / AEC_Annual Energy Consumption (AEC hood) / EEC_Energy Efficiency class / FDE_Fluid Dynamic Efficiency (FDE hood) / FDEC_Fluid Dynamic Efficiency class / LE_Lighting Efficiency (LE hood) / LEC_Lighting Efficiency class / GFE_Grease Filtering Efficiency / GFEC_Grease Filtering Efficiency class / Qmin_Air flow (in m³/h) at min speed in normal use / Qmax_Air flow (in m³/h) at max speed in normal use / Qboost_Air flow (in m³/h) at intensive or boost setting (max air-flow) / SPEmin_Airborne acoustical A-weighted sound power emissions at min speed in normal use / SPEmax_Airborne acoustical A-weighted sound power emissions at max speed in normal use / SPEboost_Airborne acoustical A-weighted sound power emissions (in dB) at intensive or boost setting / PO_Power consumption in off mode (Po) / Ps_Power consumption in stand by mode (Ps). **PI_Additional information according to 66/2014** F_Time increase factor / EEl_Energy Efficiency Index / Qbep_Measured air flow rate at best efficiency point / Pbep_Measured air pressure at best efficiency point / Qboost_Maximum air flow / Wbep_Measured electric power input at best efficiency point / WL_Nominal power of the lighting system / Emiddle_Average illumination of the lighting system on the cooking surface / Lwa=SPEmax_Sound pressure level at the highest speed.