

## TIME

### Version

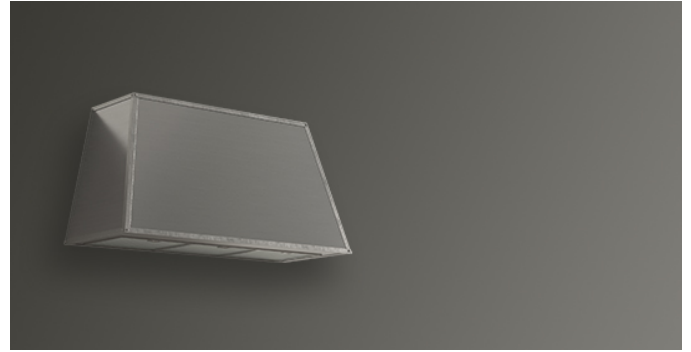
Wall 115 cm, Stainless steel, worn steel trim, 800 m<sup>3</sup>/h

### Collection

Classic

### EAN code

8034122477534



The photograph is purely for information  
It may not correspond to the selected version.

## FEATURES

**Electronic control**

**LED lighting**

**Metallic grease filter, removable and washable**

**Charcoal filter included**

**Optional remote control**

## OPTIONAL ACCESSORIES

### 105080053

Remote control

### KACL.798#41F

Remote under-roof motor 950 m<sup>3</sup>/h

### KACL.770#41F

Remote under-roof 1100 m<sup>3</sup>/h

Brushless

### KACL.786#41F

Outdoor extractor fan 1000 m<sup>3</sup>/h

### KACL.796#4AF

Outdoor extractor fan 1500 m<sup>3</sup>/h

### KACL.797#4AF

Remote under-roof motor 1300 m<sup>3</sup>/h

## TECHNICAL FEATURES

### Installation type

Wall

### Dimensions

115 cm cm

### Finishing

Stainless steel

Stainless steel, antique steel

### Motor

800 m<sup>3</sup>/h

### Type of control

Electronic control

## PACKAGING:WEIGHTS AND VOLUMES

### Gross weight

27.40 kg

### Net weight

22.20 kg

### Volume

0.43 m<sup>3</sup>

### Packaging size

Length

1310 mm

Height

595 mm

Depth

550 mm

## CONSUMPTION AND CONNECTION FEATURES

### Maximum consumption

280 W

### Voltage / Frequency

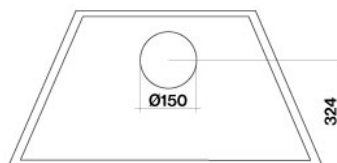
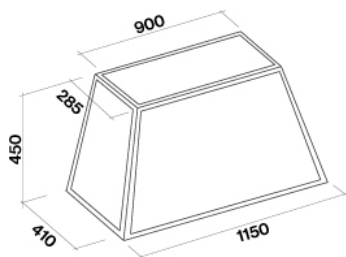
220-240V

50-60Hz

### ENERGY CLASS

A

Rear view



## TIME

### Version

Wall 115 cm, Stainless steel, worn steel trim, 800 m<sup>3</sup>/h

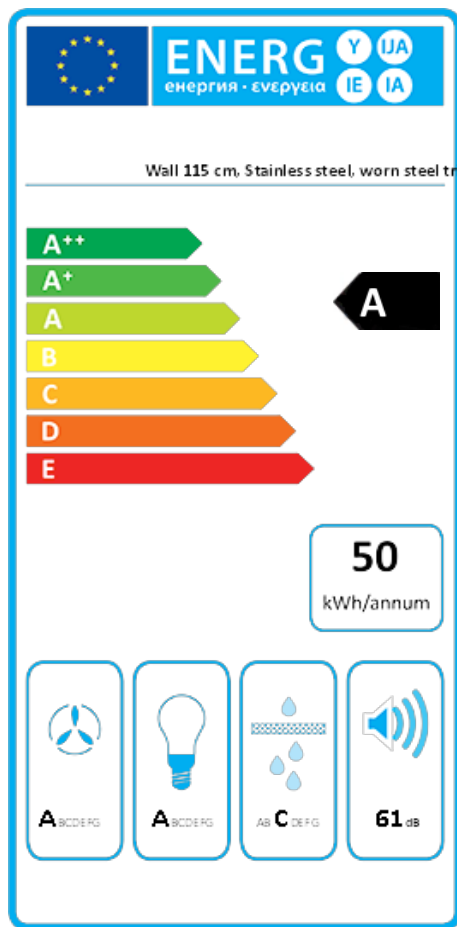
### Collection

Classic

### EAN code

8034122477534

## ENERGY LABEL



PF		
S	Falmec Spa	
M	Wall 115 cm, Stainless steel, worn steel trim, 800 m <sup>3</sup> /h	
AEC	49,5	kWh/a
ECC	A	
FDE	32,6	
FDEC	A	
LE	31,4	
LEC	A	
GFE	80,0	
GFEC	C	
Qmin	240,0	m <sup>3</sup> /h
Qmax	460,0	m <sup>3</sup> /h
Qboost	700,0	m <sup>3</sup> /h
SPEmin	49	dBa
SPEmax	61	dBa
SPEboost	66	dBa
PO	-	W
PS	0,48	W
PI		
F	0,8	
EEl	48,8	
Qbep	453,0	m <sup>3</sup> /h
Pbep	383	Pa
Qboost	700,0	m <sup>3</sup> /h
Wbep	148,0	W
WL	8,60	W
Emiddle	270	lux
Lwa-SPEmax	61	dBa

**PF\_Product fiche according to 65/2014** S\_Supplier name / M\_Model identification / AEC\_Annual Energy Consumption (AEC hood) / EEC\_Energy Efficiency class / FDE\_Fluid Dynamic Efficiency (FDE hood) / FDEC\_Fluid Dynamic Efficiency class / LE\_Lighting Efficiency (LE hood) / LEC\_Lighting Efficiency class / GFE\_Grease Filtering Efficiency / GFEC\_Grease Filtering Efficiency class / Qmin\_Air flow (in m<sup>3</sup>/h) at min speed in normal use / Qmax\_Air flow (in m<sup>3</sup>/h) at max speed in normal use / Qboost\_Air flow (in m<sup>3</sup>/h) at intensive or boost setting (max air-flow) / SPEmin\_Airborne acoustical A-weighted sound power emissions at min speed in normal use / SPEmax\_Airborne acoustical A-weighted sound power emissions at max speed in normal use / SPEboost\_Airborne acoustical A-weighted sound power emissions (in dB) at intensive or boost setting / PO\_Power consumption in off mode (Po) / Ps\_Power consumption in stand by mode (Ps). **PI\_Additional information according to 66/2014** F\_Time increase factor / EEl\_Energy Efficiency Index / Qbep\_Measured air flow rate at best efficiency point / Pbep\_Measured air pressure at best efficiency point / Qboost\_Maximum air flow / Wbep\_Measured electric power input at best efficiency point / WL\_Nominal power of the lighting system / Emiddle\_Average illumination of the lighting system on the cooking surface / Lwa=SPEmax\_Sound pressure level at the highest speed.