

SKEMA

Version

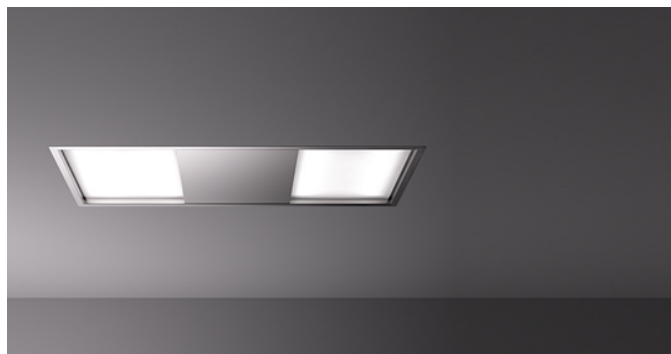
Remote under-roof motor 1300 m³/h

Collection

Design+

EAN code

8034122360973



*The photograph is purely for information
It may not correspond to the selected version.*

FEATURES

Perimeter suction
Electronic control
LED lighting
Metallic grease filter,
removable and washable
Remote control included
Dynamic LED Light (2700K -
5600K)
Tempered glass

OPTIONAL ACCESSORIES

KACL.770#41F
Remote under-roof 1100 m³/h
Brushless

KACL.782#49F
Slim motor 800 m³/h

KACL.786#41F
Outdoor extractor fan 1000
m³/h

KACL.796#4AF
Outdoor extractor fan 1500 m³/h

KACL.797#4AF
Remote under-roof motor 1300
m³/h

KACL.798#41F
Remote under-roof motor 950
m³/h

KACL.815
Protective cleaning cloths for
stainless steel (box 10 pcs)

KACL.939#BF
Ceiling re-circulation filtering kit
(only for Slim Motor)

TECHNICAL FEATURES

Installation type
Ceiling

Dimensions
120 cm

Finishing
Scotch brite stainless steel (AISI
304)

Type of control
Electronic control

Speed settings
4

Lighting
All surface 43 W (2700-5600 K)

Maximum distance
Gas hob: 150 cm
Electric hob: 150 cm

PACKAGING:WEIGHTS AND VOLUMES

SKEMA Gross weight

30.2 kg

Net weight

26.7 kg

Volumes

0.18 m³

Packaging size

Length

1420 mm

Height

190 mm

Depth

670 mm

REMOTE MOTOR Remote under-roof motor 1300 m³/h

Gross weight

15 kg

Net weight

13.5 kg

Volumes

0.09 m³

Packaging size

Length

530 mm

Height

440 mm

Depth

380 mm

CONSUMPTION AND CONNECTION FEATURES

Maximum consumption

30 W

Voltage

220-240V

Frequency

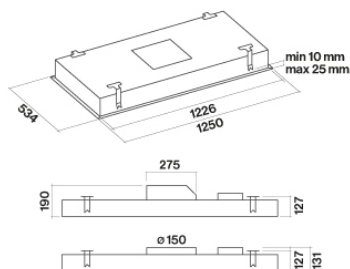
50-60Hz

Plug type

Shuko

ENERGY CLASS

0



Hood and motor dimensions