

## SKEMA

### Version

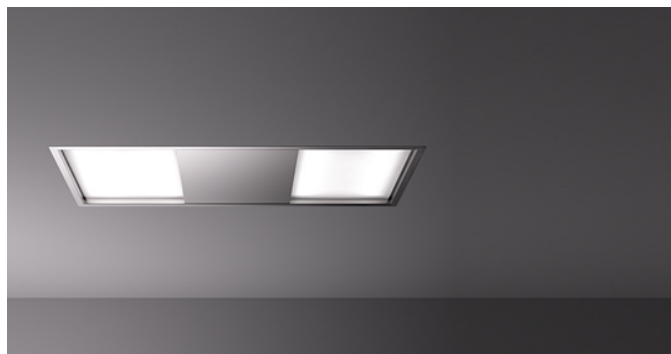
Outdoor extractor fan 1500  
m<sup>3</sup>/h

### Collection

Design+

### EAN code

8034122360973



*The photograph is purely for information  
It may not correspond to the selected version.*

## FEATURES

**Perimeter suction**  
**Electronic control**  
**LED lighting**  
**Metallic grease filter, removable and washable**  
**Remote control included**  
**Dynamic LED Light (2700K - 5600K)**  
**Tempered glass**

## OPTIONAL ACCESSORIES

**KACL.770#41F**  
Remote under-roof 1100 m<sup>3</sup>/h  
Brushless

**KACL.782#49F**  
Slim motor 800 m<sup>3</sup>/h

**KACL.786#41F**  
Outdoor extractor fan 1000  
m<sup>3</sup>/h

**KACL.796#4AF**  
Outdoor extractor fan 1500 m<sup>3</sup>/h

**KACL.797#4AF**  
Remote under-roof motor 1300  
m<sup>3</sup>/h

**KACL.798#41F**  
Remote under-roof motor 950  
m<sup>3</sup>/h

**KACL.815**  
Protective cleaning cloths for  
stainless steel (box 10 pcs)

**KACL.939#BF**  
Ceiling re-circulation filtering kit  
(only for Slim Motor)

## TECHNICAL FEATURES

**Installation type**  
Ceiling

**Dimensions**  
120 cm

**Finishing**  
Scotch brite stainless steel (AISI  
304)

**Type of control**  
Electronic control

**Speed settings**  
4

**Lighting**  
All surface 43 W (2700-5600 K)

**Maximum distance**  
Gas hob: 150 cm  
Electric hob: 150 cm

## PACKAGING:WEIGHTS AND VOLUMES

### SKEMA Gross weight

30.2 kg

### Net weight

26.7 kg

### Volumes

0.18 m<sup>3</sup>

### Packaging size

Length

1420 mm

Height

190 mm

Depth

670 mm

### REMOTE MOTOR Outdoor extractor fan 1500 m<sup>3</sup>/h Gross weight

17 kg

### Net weight

15 kg

### Volumes

0.07 m<sup>3</sup>

### Packaging size

Length

545 mm

Height

255 mm

Depth

530 mm

## CONSUMPTION AND CONNECTION FEATURES

### Maximum consumption

30 W

### Voltage

220-240V

### Frequency

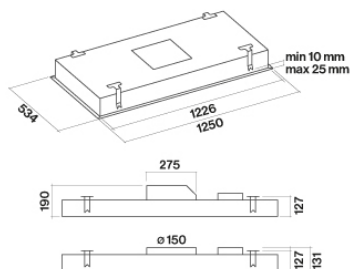
50-60Hz

### Plug type

Shuko

### ENERGY CLASS

0



*Hood dimensions with under-roof motor (optional flange)*